



Imatis Delivers Integrated Patient Self-Service and Hospital Information Applications with Advantech Infotainment Terminals

Market: Medical
Location: Norway
Technology Partner: Imatis

Project Introduction

Imatis is a leading provider of innovative software solutions for the healthcare industry. Imatis products focus on connecting people, information, processes, and systems within a healthcare organization to achieve truly integrated healthcare systems.

The infotainment market began as a replacement to TV sets in hospital patient rooms. As technology developed, the focus grew to include clinical access and connectivity to hospital information systems (HIS). The industry is now demanding integrated portals that can provide patient applications such as meal ordering, patient blogs, and a nurse call system; serve as platforms for viewing X-rays, scans, and patient charts; be adapted for customized ward or department-specific services; and provide hospitals with a method to create an electronic medical record (EMR) as mandated by more and more government health care agencies. This is all in addition to serving entertainment needs like TV, radio, video, internet, console gaming, telephone, instant messaging and VOIP.



“Advantech's Patient Infotainment Terminal offers many advantages to the bed-side care environment. It has cleanable housing, suitable for use in a medical care facility. It can easily be mounted with a swing arm and cable, saving space and providing easy access.”

Solution

Imatis has developed into the clear leader in the global market for infotainment in the healthcare industry. They provide an integrated application system, IMATIS Ludus, which runs on Advantech Patient Infotainment Terminals like the PIT-1502. They recently installed 300 of these terminals in St. Olav's University Hospital, in Trondheim, Norway, as part of a technology refresh. St. Olav's is a state-of-the-art hospital which was built with digital healthcare technology from the ground up.



The IMATIS Ludus software suite is not limited to just the Advantech PIT series; it can run on other systems like the Advantech HIT-series Hospital Infotainment terminal, or our DSS-series of Digital Signage solutions. Imatis takes the lead in project management, working with Advantech's global service and local support network, the healthcare facility, and third party installers as needed.

System

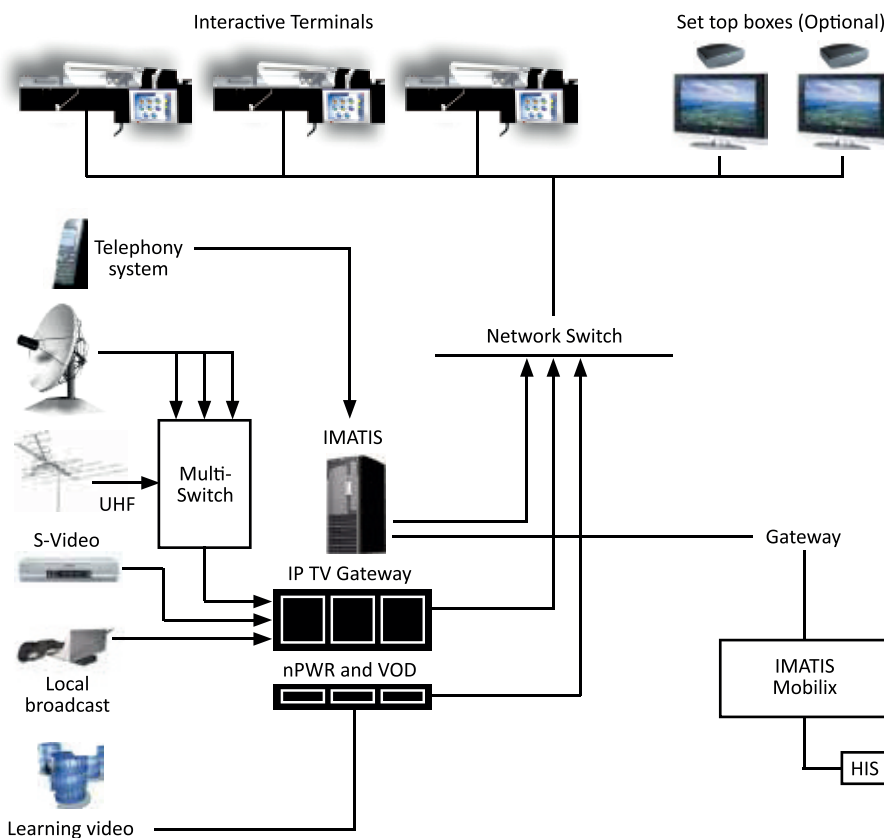
Advantech PIT-series Patient Infotainment terminals are ITE and medically dual-certified, providing screen-to-receptacle solutions designed with VESA swing-arm mounts and integrated cable management. These patient bedside terminals can be stowed when not in use, are easily cleaned and very reliable. In other environments where aesthetic looks are a key factor, the sleek-looking HIT-series, Healthcare Infotainment terminals, with full-flat front panels and polished finish enclosures host the IMATIS Ludus application portal. Advantech DSS-series digital signage displays are perfect for replacing whiteboards in nursing stations, helping manage patient whereabouts, or patient charting on a big-board display. Connectivity to an HIS allows staff the ability to query the system, locate a patient, or access the EMR from any point in the hospital. Peripherals like a handset, RFID, Smartcard reader or MSR increase efficiency, improve accuracy and ensure safety while reducing or eliminating paper-based records.

Advantech solutions like the PIT- 1502 equipped with the Intel® Atom™ processor N450 or D510 (dual core). These processors include integrated, enhanced graphics and memory controllers on 45nm process technology, delivering significant power reduction, performance improvements, and smaller platform footprint over the previous generation. This platform includes the Intel® 82801HM I/O Controller, providing an Intel® High Definition Audio interface, along with rich I/O capabilities and flexibility via high bandwidth interfaces such as PCI Express, PCI, Serial ATA, and Hi-Speed USB 2.0 connectivity.

Benefits

The IMATIS Ludus application portal provides hospitals and clinics with patient-centered, digital healthcare solutions with many immediate benefits:

- Increased efficiency, safety, risk reduction, and error prevention
- Compliance with EMR mandates
- Single-point for information and entertainment options in patient rooms
- Medically-certified devices which are durable and easy-to-clean with solvents
- Complete solutions that are certified by Advantech to work – from cable management, to mounting hardware, to terminal
- Real-time access to HIS
- Fully integrated software and installation from Imatis
- Smartcard authentication to limit access to authorized personnel



For more information about the Advantech healthcare products and service solutions, or to read more success stories, please visit the Advantech website at www.advantech.com.