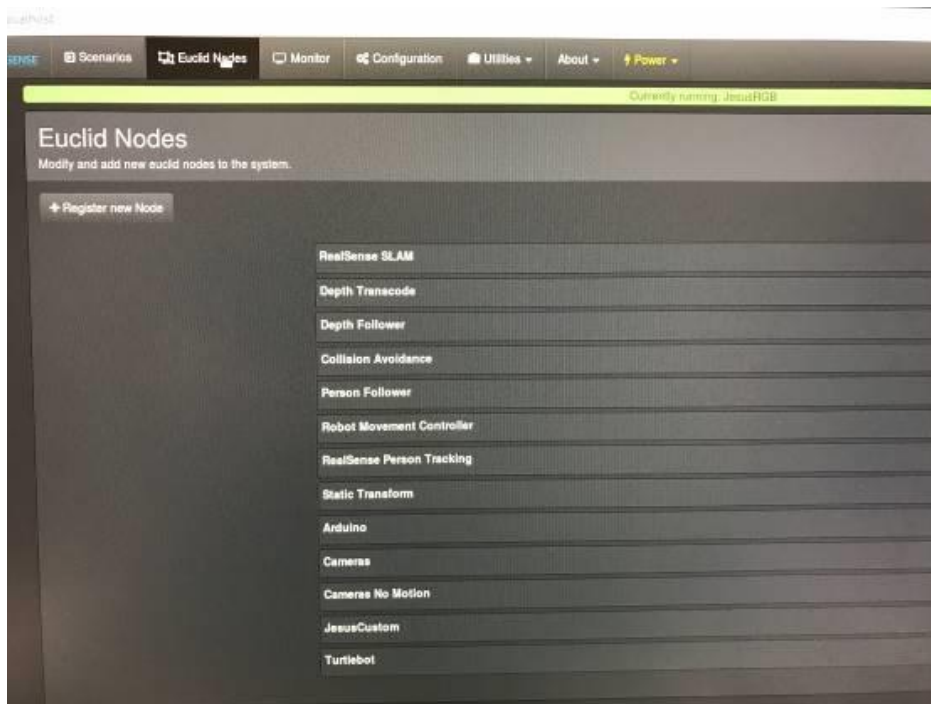
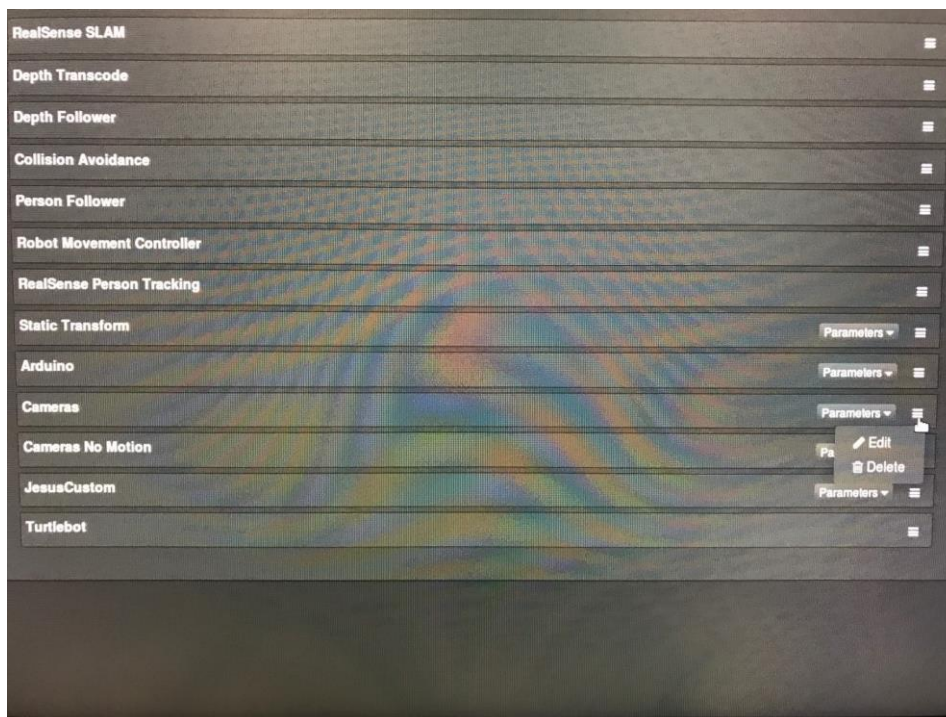


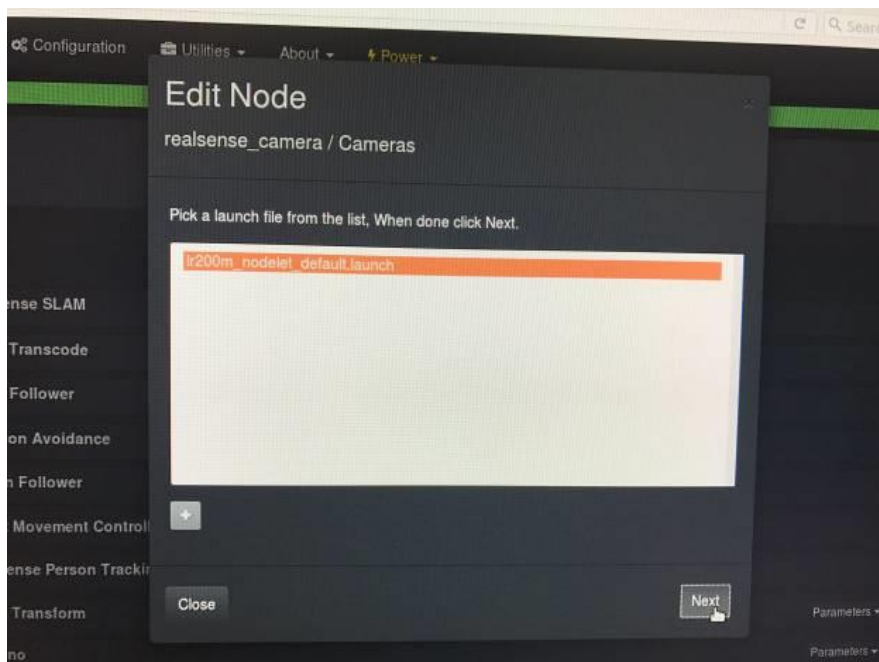
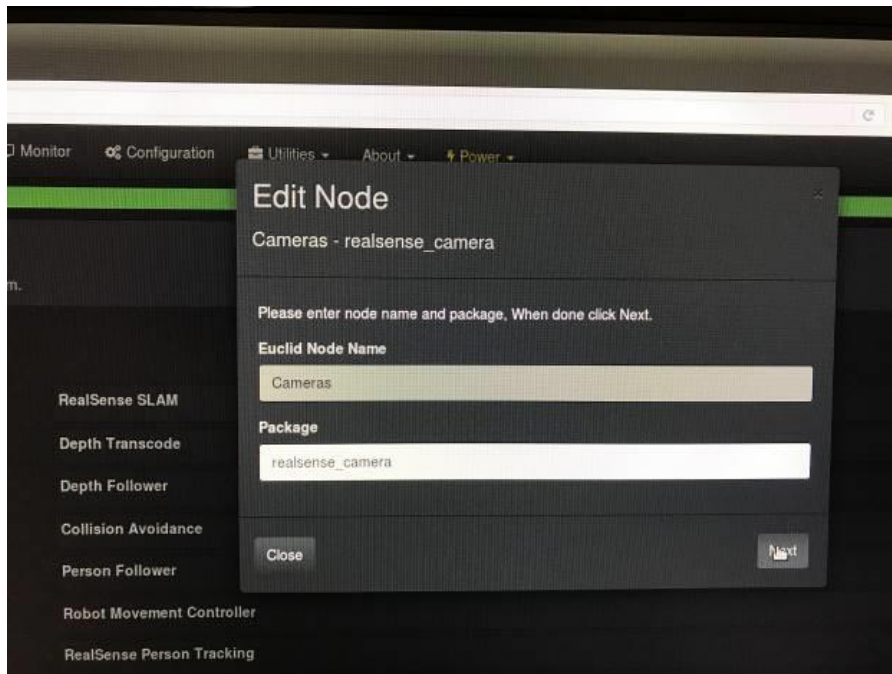
In the Euclid browser interface, click on Euclid Nodes.



Select the node you want to edit, such as Cameras, and select "Edit."



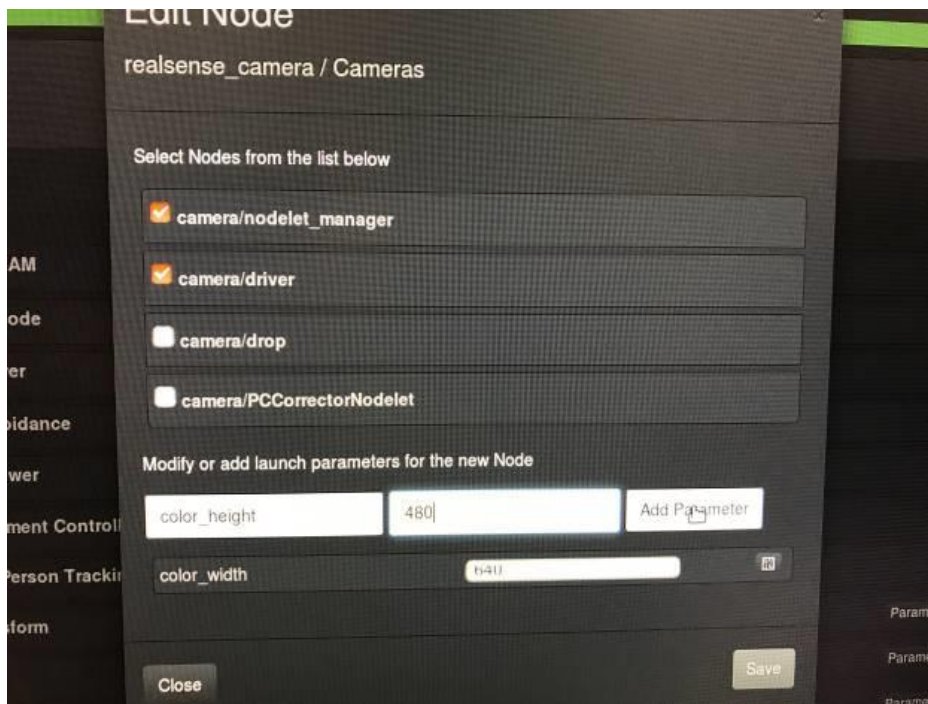
Select "Next" on the following two screens.



In the next screen, add the color resolution parameters and enter your desired values. The supported resolutions are 1920x768, 640x480, and 320x240.

color_height: 480

color_width: 640



Click "Save." Run your desired scenario that uses the Node you edited.