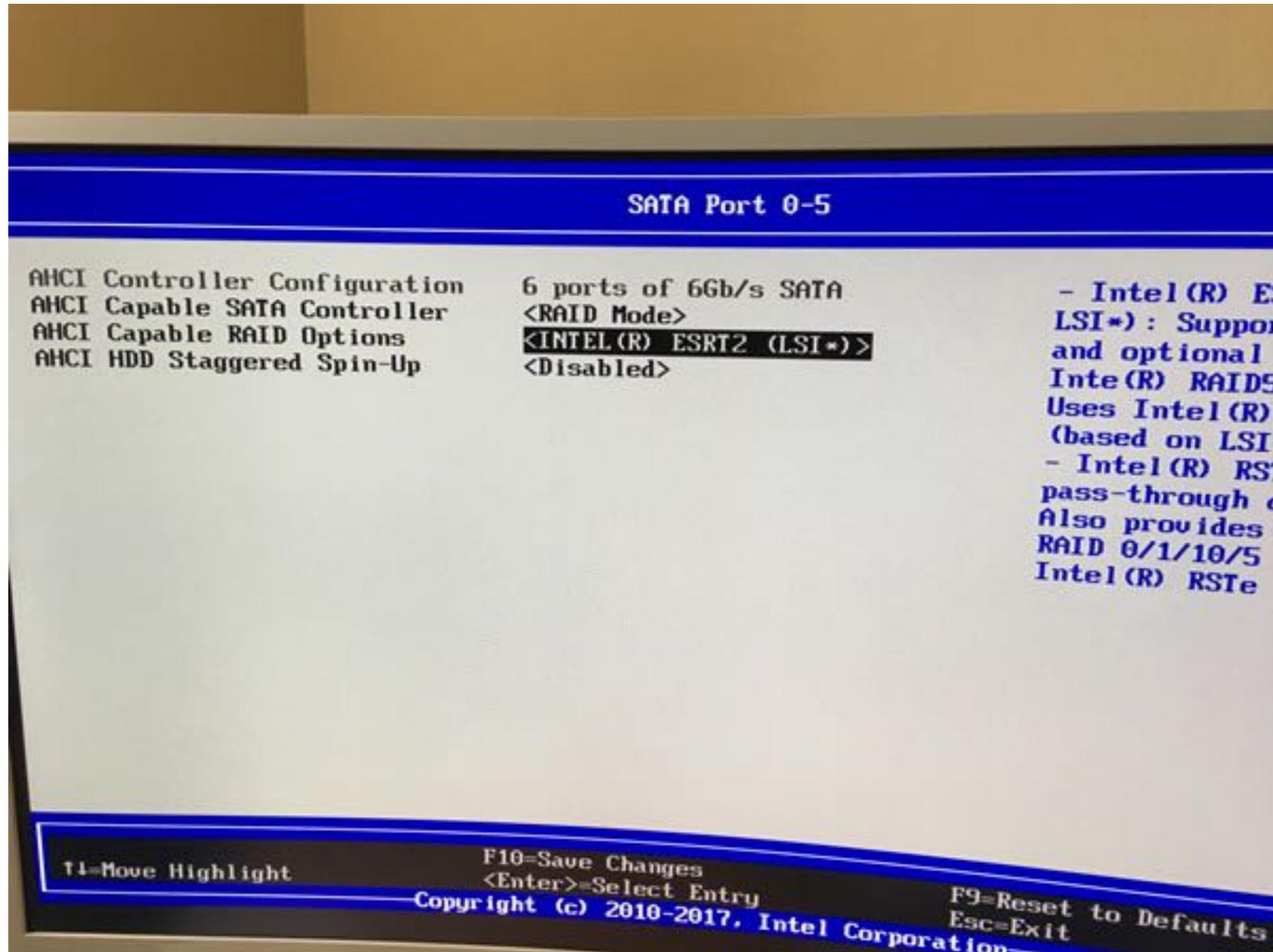


AHCI Capable RAID Options select Intel® ESRT2 not detect any disk AT BOOT

```
PCI 0/1F] SATA Controller  
No Virtual drive(s) Configured.  
No Hard Disks found. Intel(R) Embedded Server RAID 2 can not be Conf  
  
>>>>> Press <Ctrl><E> to enter ESRT2 SATA <<<<<<  
(c)2009 Copyright LSI Corporation. All Rights Reserved.
```

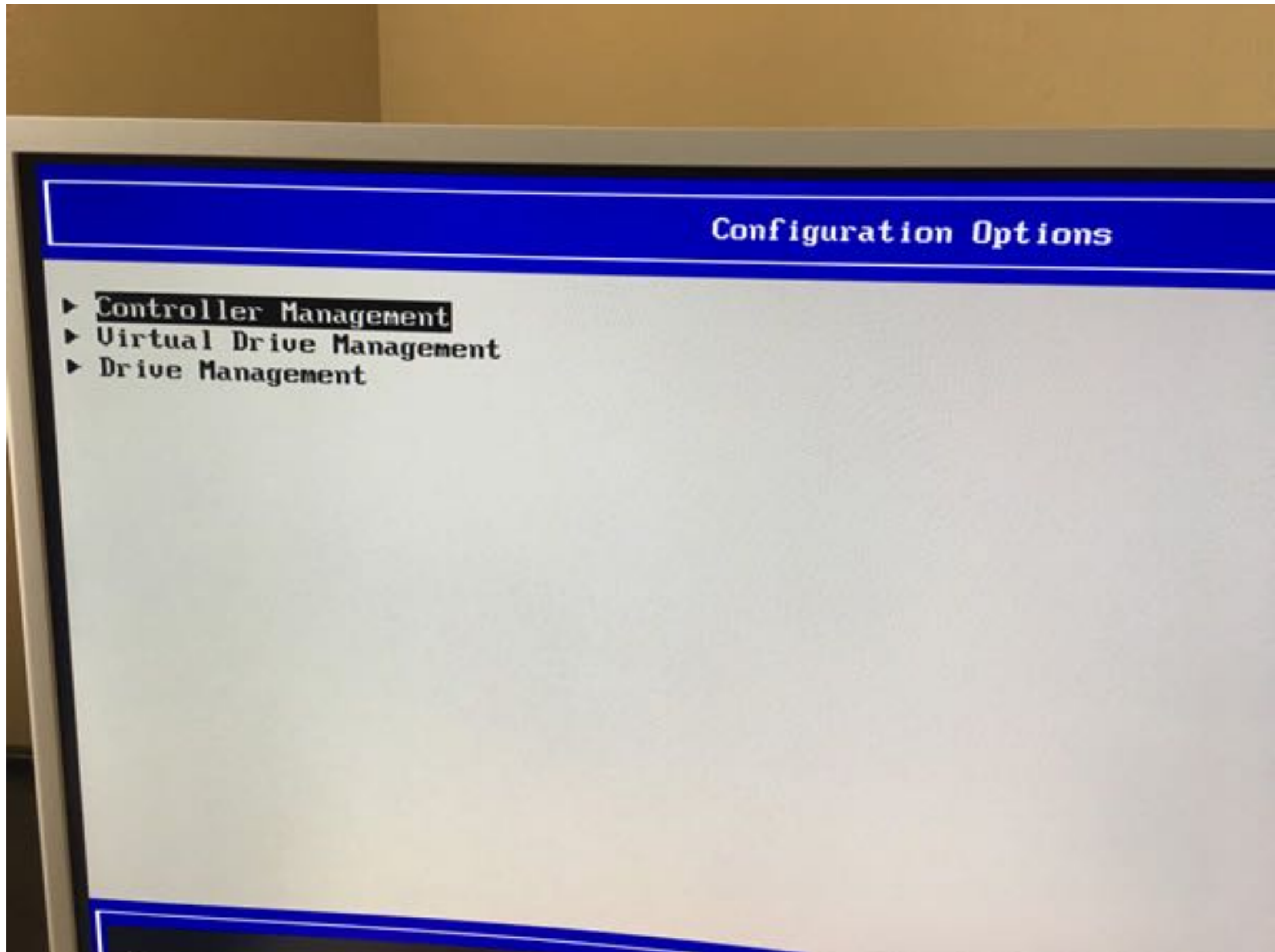
RAID enable Intel® ESRT2 not detect any disk UNDER UEFI BOOT



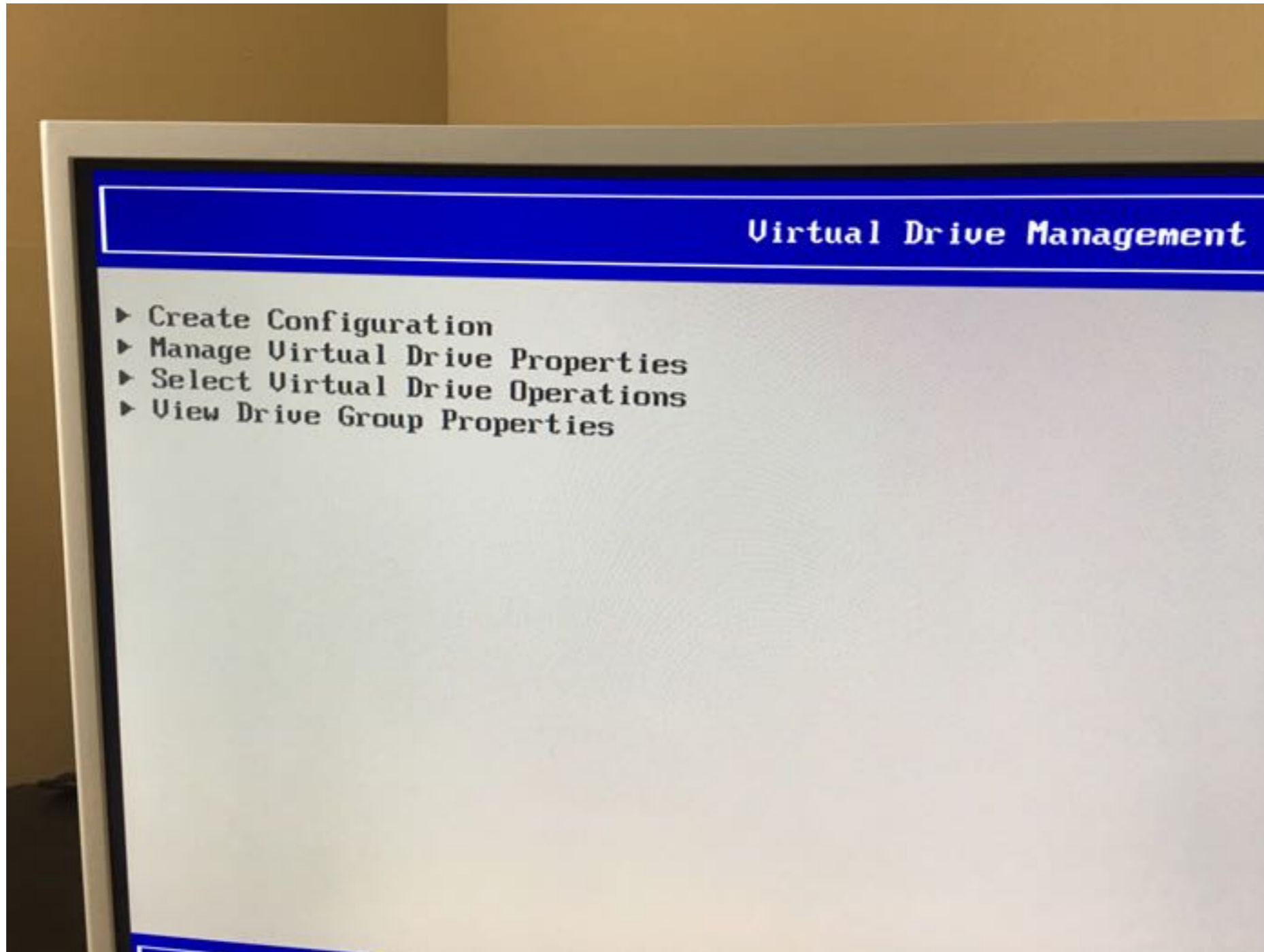
UEFI boot to make Configuration in AHCI Capable RAID Options select Intel® ESRT2



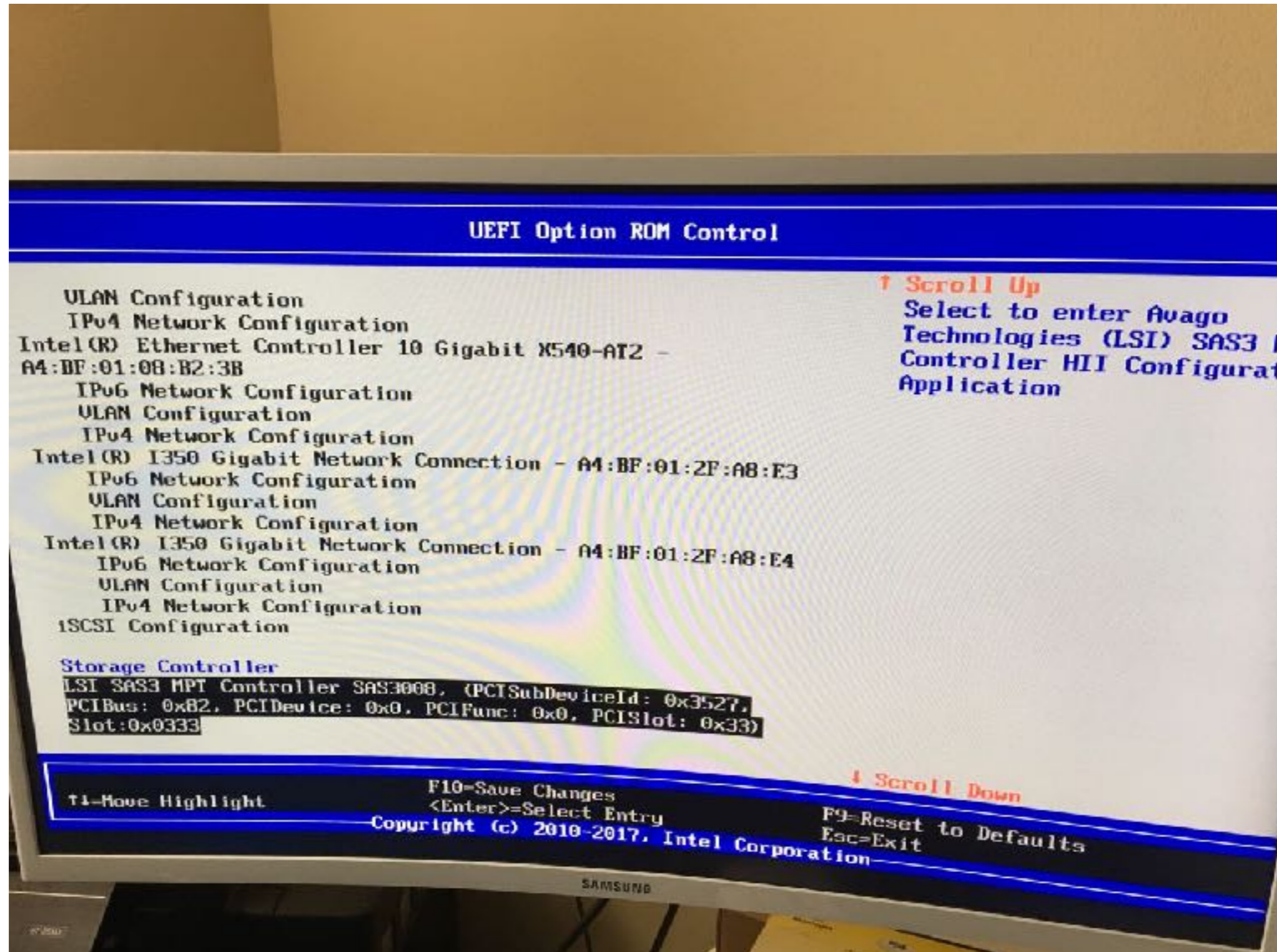
## Inside Raid Administration



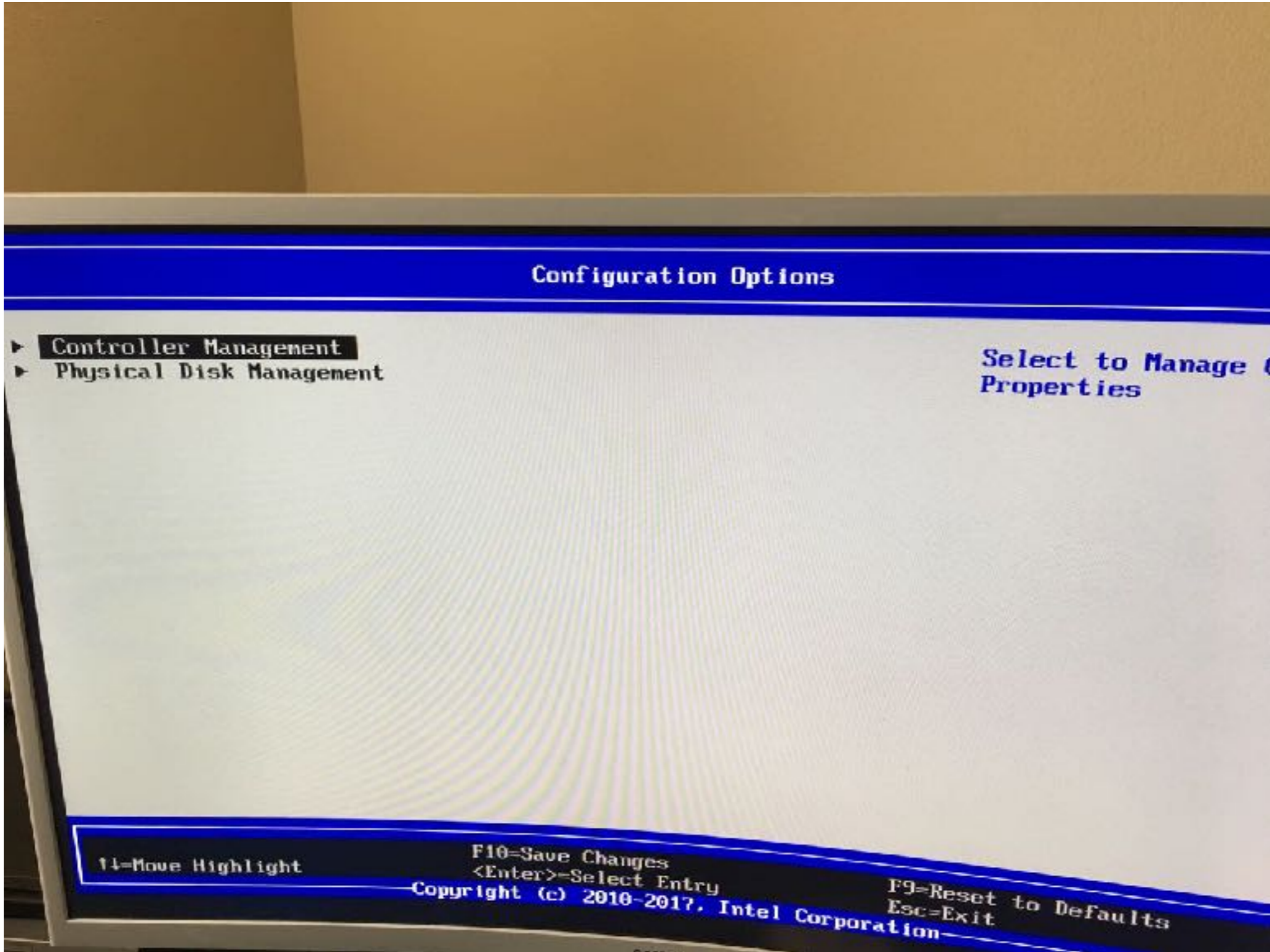
All buttons to create or modified a RAID Intel® ESRT2 ARE DISABLE.



UEFI I can see ANOTHER Controller SAS3008 so after press enter I can't not see any button make the configuration for Raid Volumes.



UEFI inside Controller SAS3008 more images from inside the Controller so still I can't not see any button make the configuration for Raid Volumes.



## Controller Management

- ▶ **View Controller Properties**
- ▶ Change Controller Properties

Select to View C  
Properties

↑=Move Highlight

F10=Save Changes

<Enter>=Select Entry

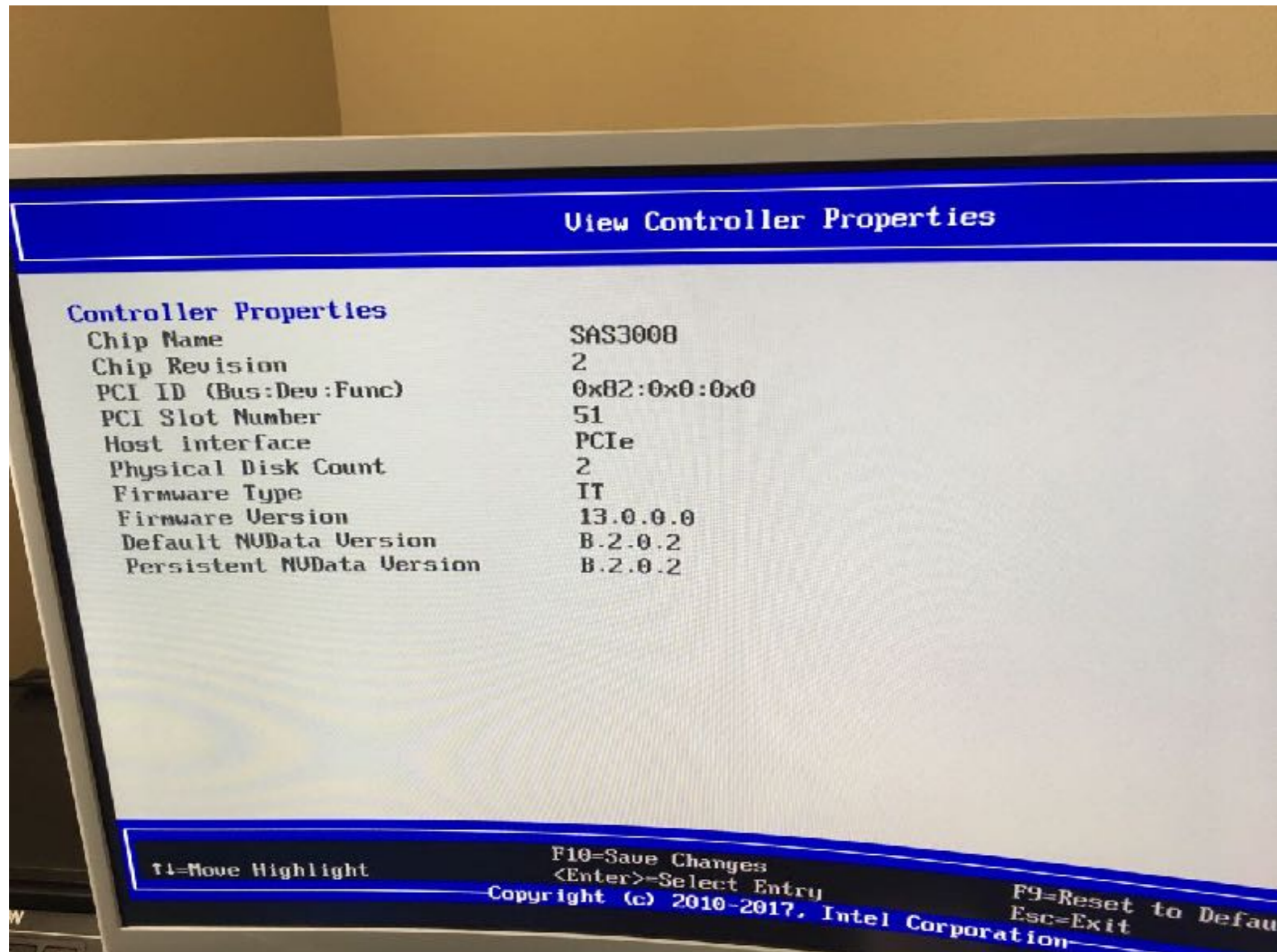
Copyright (c) 2010-2017, Intel Corporation

F9=Reset to Defaults  
Esc=Exit

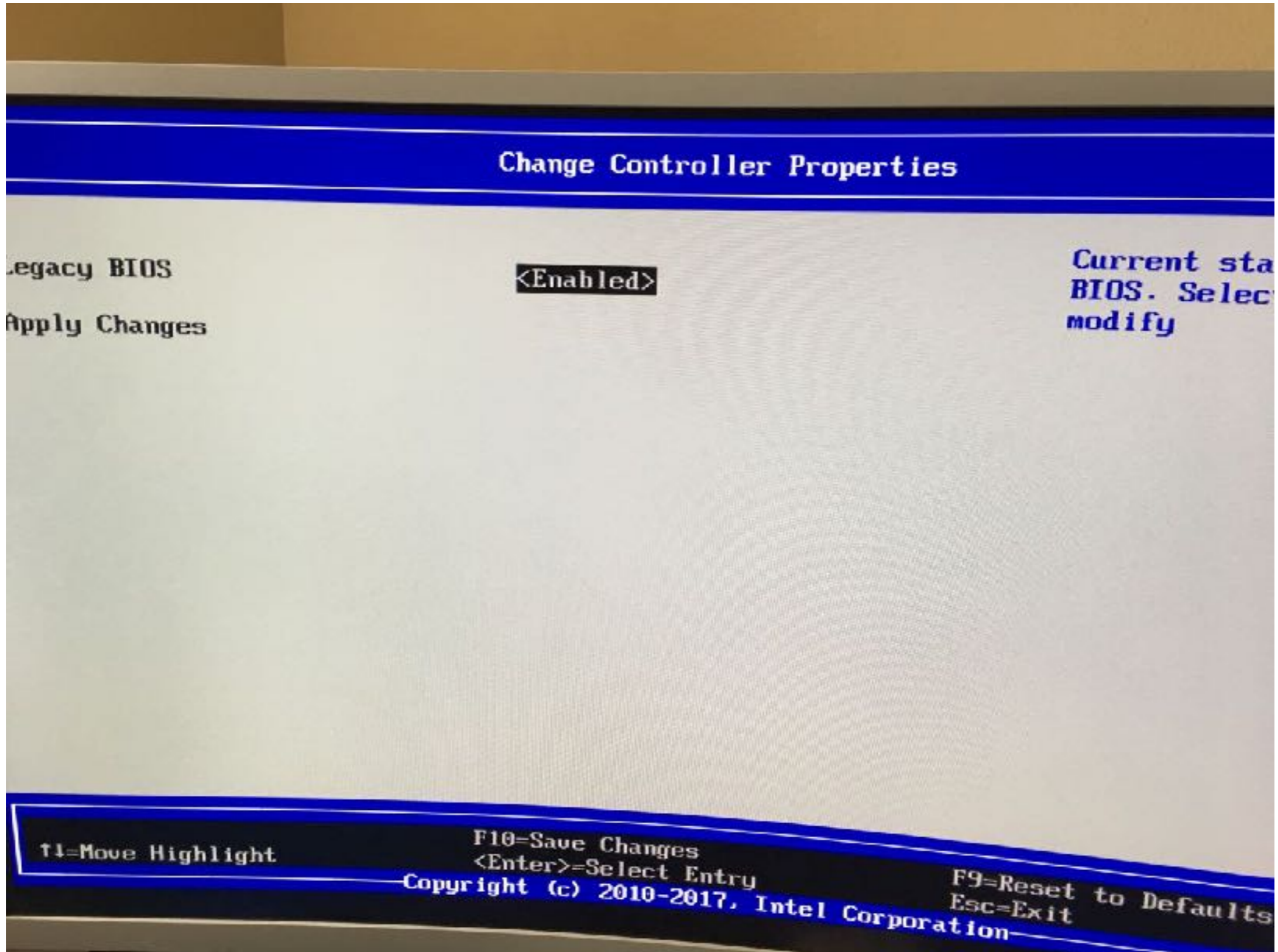
SAMSUNG



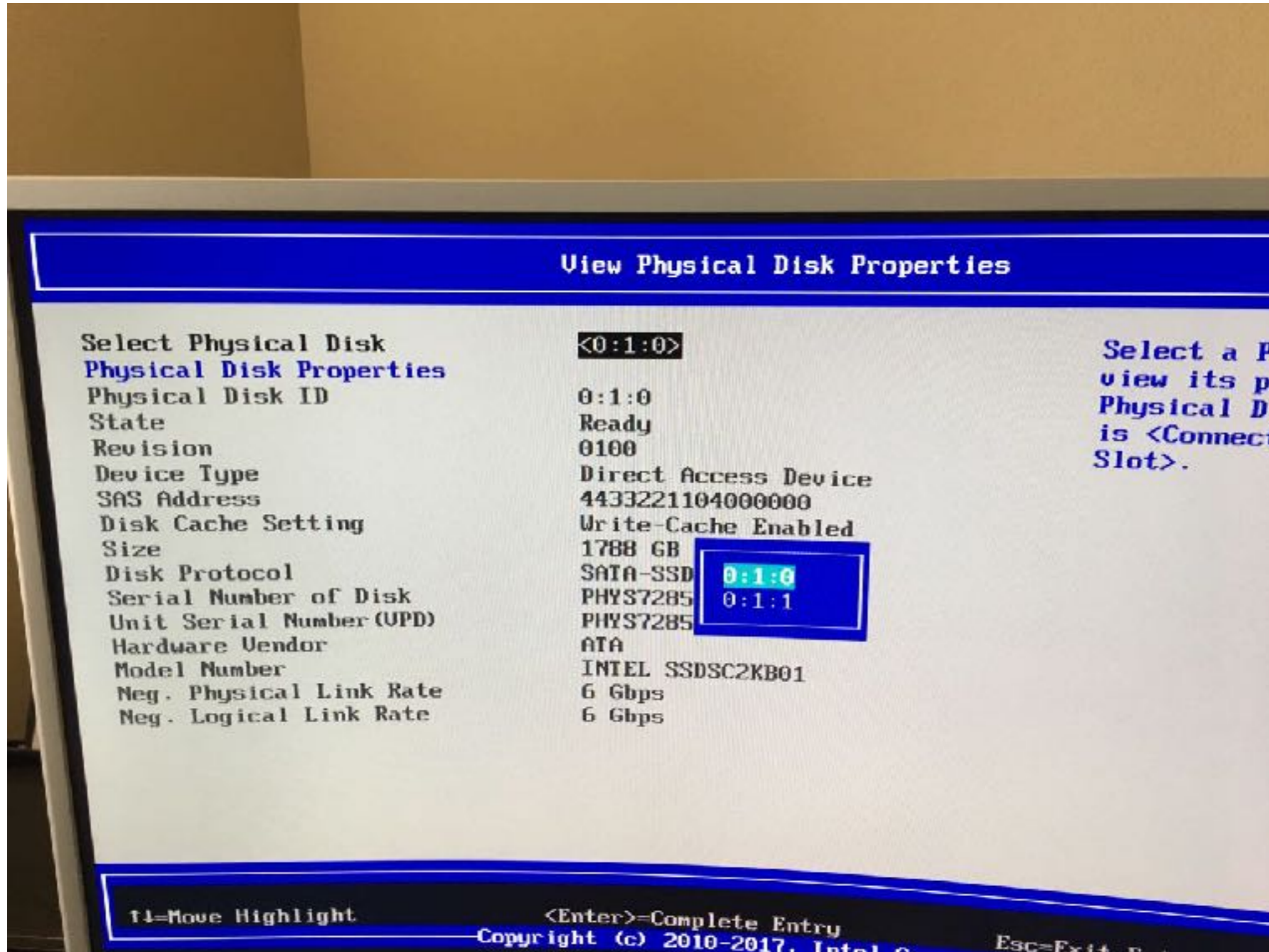
## UEFI inside Controller SAS3008 properties



UEFI inside Controller SAS3008 Bios Enable.



Inside UEFI inside Controller SAS3008 I can see the Physical Disks. I installed 2 Disks SATA SSD Intel Disks.



## Mass Storage Controller Configuration

- ▶ **SATA Port 0-5**
- ▶ sSATA Port 0-3

Configure  
and view  
informati

Intel(R) Storage Module  
- None

↑=Move Highlight

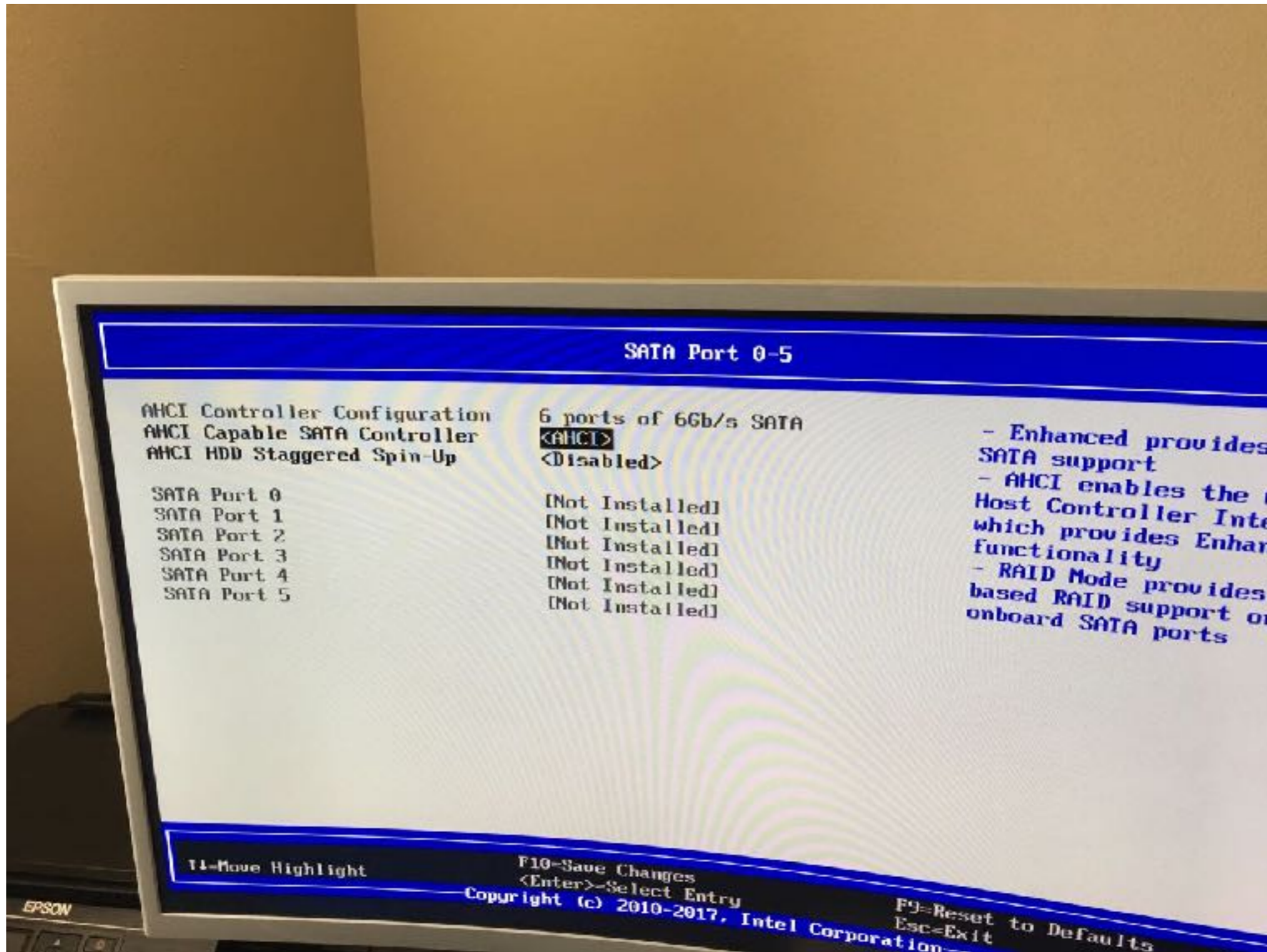
F10=Save Changes

<Enter>=Select Entry

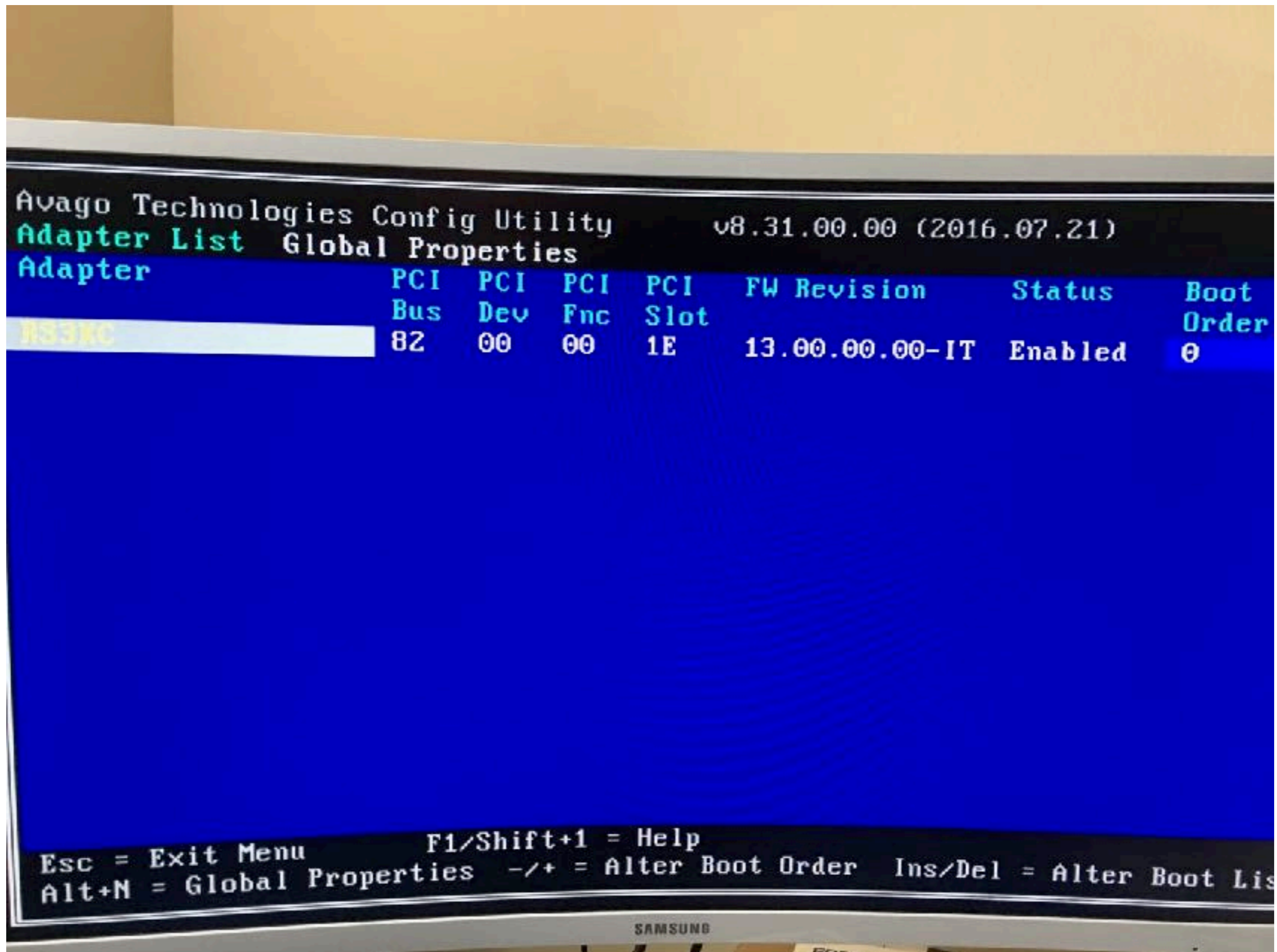
Copyright (c) 2009 Intel Corporation

F11=Exit

SATA ports from 0-5 doesn't show any disk to create raid.



When System Boot if I press Ctrl-C I can see the Avago Raid and also the disks attached see next page.



# SAS3008 show the disks

```
go Technologies Config Utility      v8.31.00.00 (2016.07.21)
Topology -- SAS3008

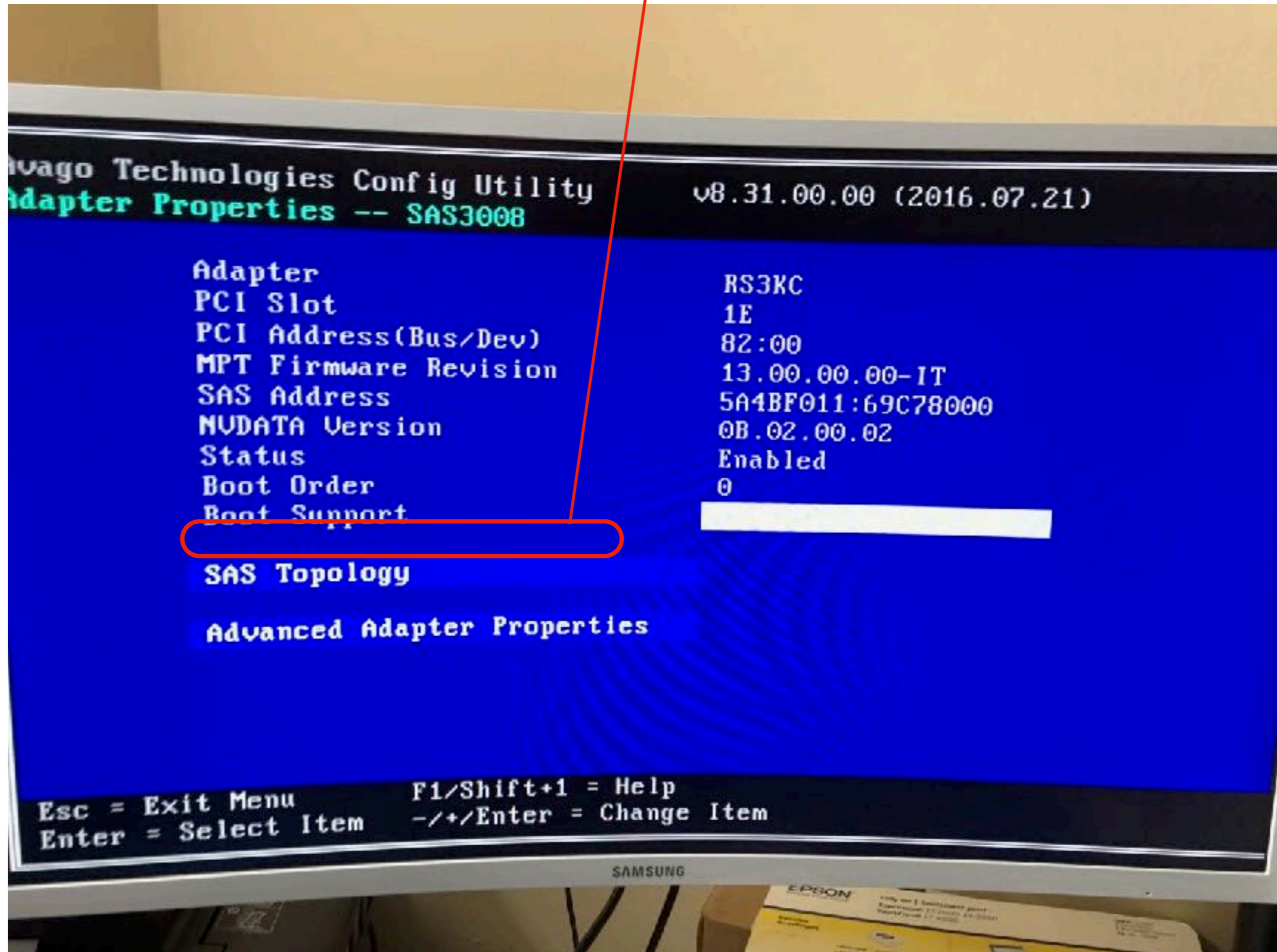
Controller
- Slot 0
- Slot 1

Device Identifier      Device Info
Direct Attached Devices
ATA      INTEL SSDSC2KB01 0100  SATA-SSD
ATA      INTEL SSDSC2KB01 0100  SATA-SSD
```

Esc = Exit F1/Shift+1 = Help  
Alt+D = Device Properties Alt+M = More Keys

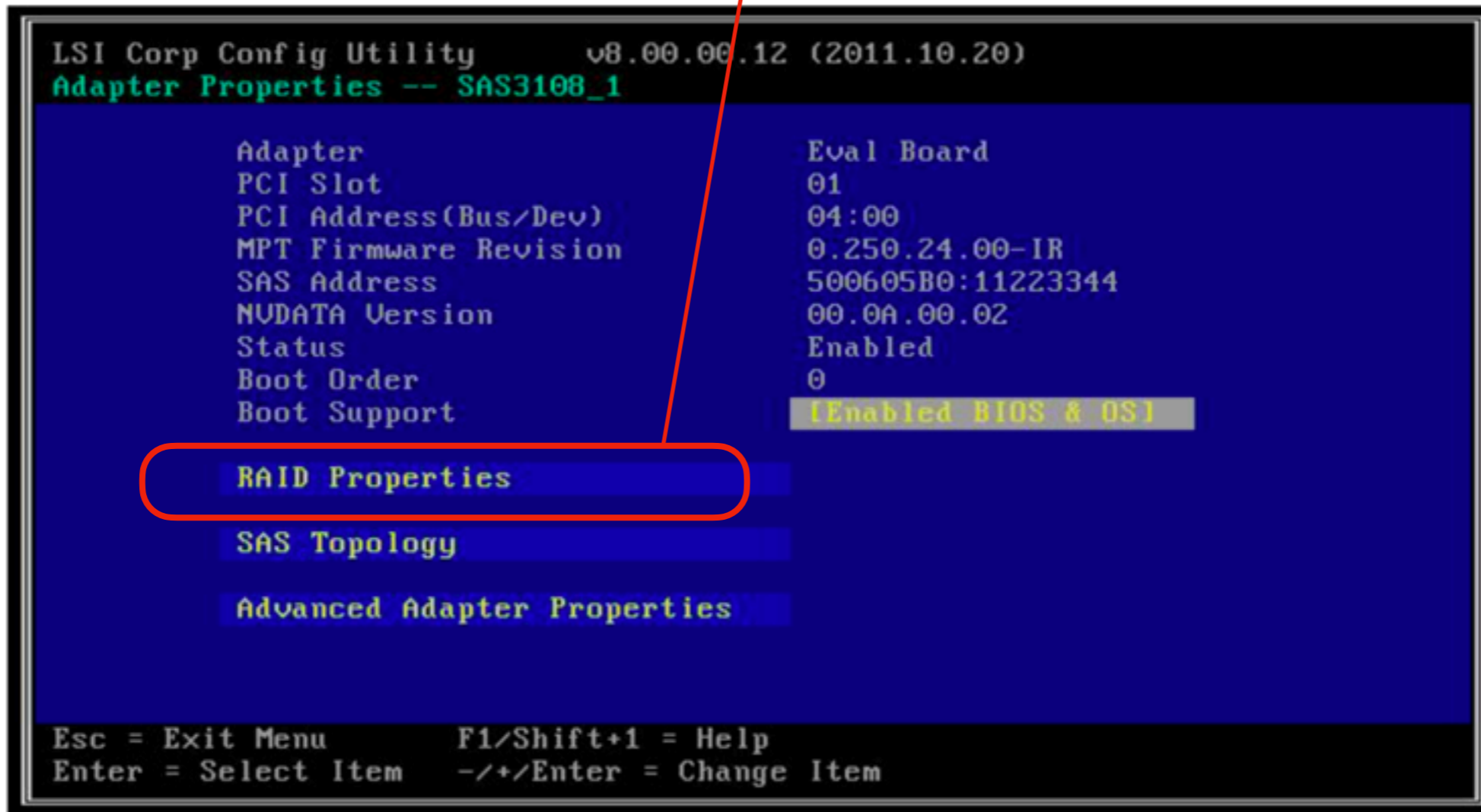
SAMSUNG

NOT RAID BUTTON To make Configuration and must be in this screen.





The Raid Button must be around here like it shows in the screen below. It is a example from another Adapter screen.



Also after Boot the System shows the disk and all OK.  
**So not Raid Button to make de Raid**

```
Avago Technologies MPT SAS3 BIOS
MPT3BIOS-8.31.00.00 (2016.07.21)
Copyright 2000-2016 Avago Technologies. All rights reserved

PCI  ENCL  LUN  VENDOR  PRODUCT  PRODUCT  SIZE \
SLOT  SLOT  NUM  NAME    IDENTIFIER  REVISION  NVDATA
-----
 30           LSI    SAS3008-IT  13.00.00.00  0B:02:00:02
 30    0    0  ATA    INTEL SSDSC2KB01 0100  1.746 TiB
 30    1    0  ATA    INTEL SSDSC2KB01 0100  1.746 TiB
2 supportable devices are presented for system boot selection!

Avago MPT3 boot ROM successfully installed!
```